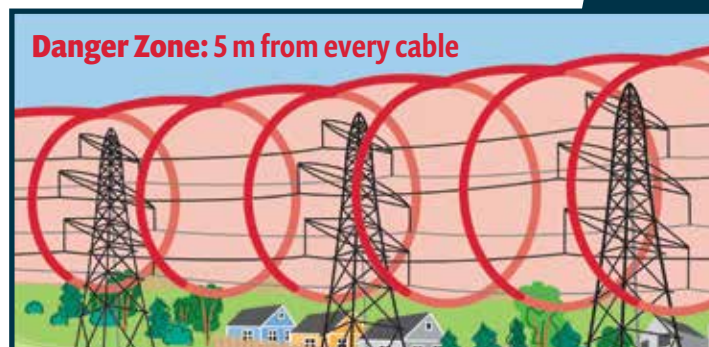


# Working together to ensure your safety and ours

## FOR SAFE AND RELIABLE HIGH-VOLTAGE LINES

Evolugen by Brookfield Renewable operates high-voltage transmission lines that carry the electricity produced in its generating stations on the Lièvre River. The 120,000-volt lines cross the municipalities of Val-des-Monts, L'Ange-Gardien and Notre-Dame-de-la-Salette as well as the Buckingham and Masson sectors of the city of Gatineau. If you live near those lines or travel within the lines corridor, read this brochure to ensure YOUR SAFETY.

### Danger Zone: 5 m from every cable



### THE DANGER

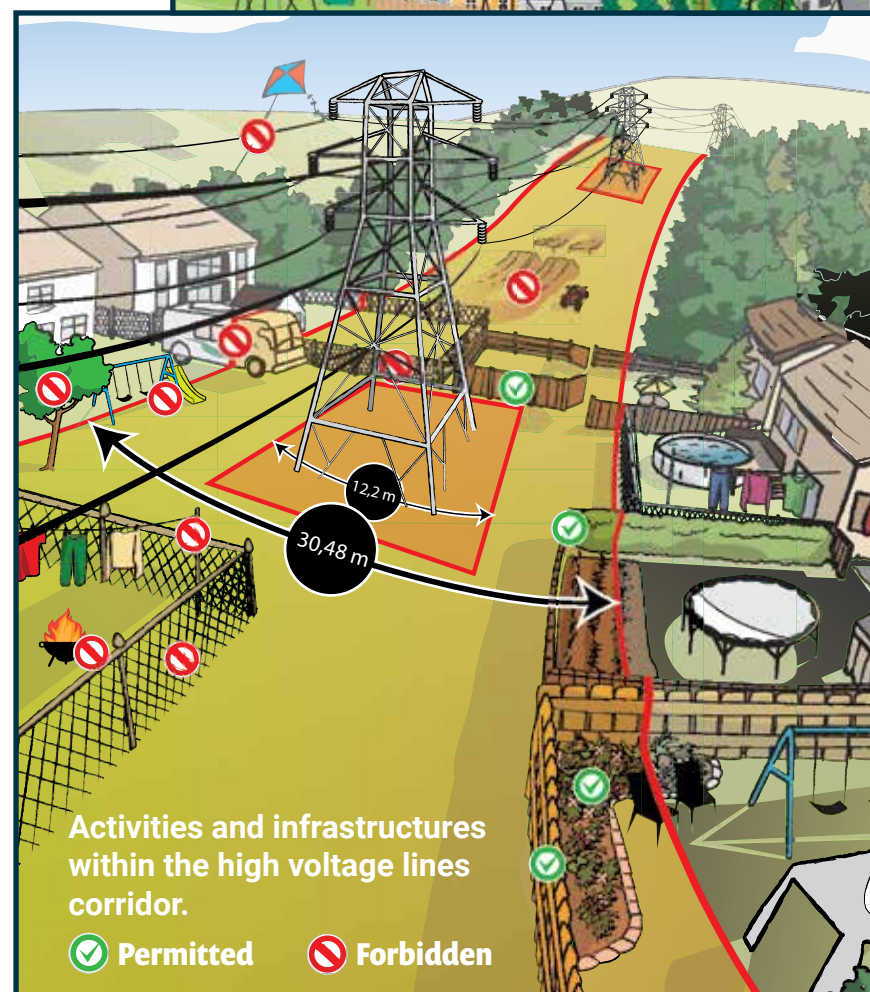
The lines voltage is 1000 times greater than that of a regular outlet. Anyone who goes within 5 meters of one of those lines could be electrocuted without even touching it. It is also extremely dangerous to be in contact with an object that is within 5 meters of the lines **even though that object may not actually touch a cable**. Note that the height of the cables varies with the electricity load and weather conditions. **Stay away from towers and power lines.**

### EMERGENCY: 911

If an overhead cable or a tower is damaged or downed, or if something touches a cable, it is an emergency. **Stay back and dial 911.**

### Easement and right of way

Evolugen owns a 150 square-metre area around the base of each of the towers supporting the power lines. In addition, it has an easement and right of way on a 30.48-metre wide corridor along the full length of the high-voltage lines.



Activities and infrastructures within the high voltage lines corridor.

✓ Permitted    ✗ Forbidden

## Rules to follow within the high-voltage lines corridor

Evolugen restricts certain activities and structures to ensure your safety and the proper functioning of the lines. Please contact us if you are unsure about the safety of your activities within the corridor.



### DEVELOPING YOUR PROPERTY

- no building structures (gazebos, temporary shelters, garages, sheds, galleries or other)
- no lamp-posts or poles higher than 1.8 meters and no clothes lines;
- no metal fences or structures;
- no trees that are (or could grow to be) taller than 1.8 meters. Trees have to be topped at 1.8 meters.
- no permanent or temporary storage of materials, goods, garbage or snow;
- no change to the level or to the slope of the ground (no digging or filling);
- no water gardens, fountains or artificial ponds;
- no outdoor fireplaces or fire pits directly beneath the electrical wires;
- no obstacles that prevents access to the high-voltage lines by maintenance workers. Any fence or hedge installed perpendicular to the lines must have an opening that meets strict conditions. Please contact us.



### SPORTS, GAMES AND LEISURE

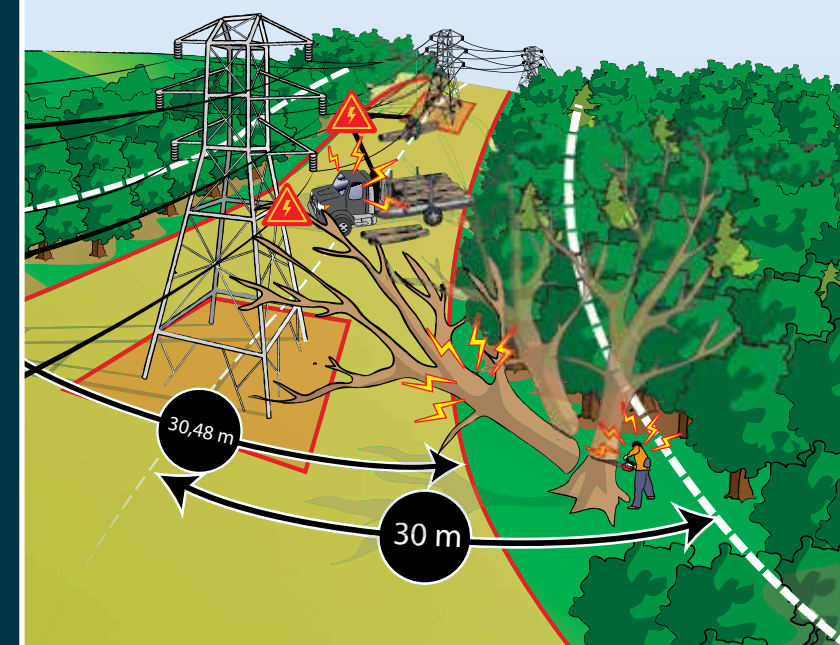
- no children's play structures (swings, trampolines, slides or other);
- no spas or swimming pools;
- no games or toys that might come dangerously close to or in contact with the power lines such as kites, water guns, drones or remotely operated airplanes;
- no fireworks close to the electrical wires or towers.



### VEHICLES AND HEAVY EQUIPMENT

- no parking (recreational vehicles, trailers, boats or other vehicles);
- no operating heavy machinery before making sure that the equipment and the items being handled will maintain a 5 meters distance of the power lines at all times. Call us if you are unsure about the distance and we will check it for you.

### Risk areas for work



### Projects?

If you are planning to cut down trees less than 30 meters from electrical cables or to use heavy equipment within the easement, make sure that the work you plan to do is safe and allows our employees to circulate on the property where the right of way applies. Contact us before you start your project and we will help you ensure your safety.

### Children's safety

Let children know the dangers of going near electrical cables or climbing towers. Explain that it is important to obey signs warning of danger and that they should never fly a kites near power lines.

### For more information

Contact us at 819-986-4628, 1-877-986-4364 or at [info@lievre@evolugen.com](mailto:info@lievre@evolugen.com)

### You can also visit

[evolugen.com](http://evolugen.com)  
and [lievreriverpower.com](http://lievreriverpower.com)

**EMERGENCY: 911**

