

INTERCONNECTION

BROOKFIELD RENEWABLE'S LIÈVRE REGION NEWSLETTER

Summer 2025



Corrosion-resistant metal anchor rods are post-tensioned and grouted for a long-lasting solution.

High Falls: anchored in rock

It's said that age is just a number, and that's especially true for dams. With strategic investments and maintenance, these critical structures can remain safe and efficient for decades.



The arrows indicate the area reinforced with steel anchors.

The High Falls dam and power station in Bowman and Val-des-Bois are a fine example. Operating for nearly 95 years, they alone power the equivalent of 35,000 households annually! To ensure its resilience well into the future, Brookfield Renewable reinforced a section of the dam in fall 2024 by installing three 35-metre-long steel rods, enhancing its compliance with the latest earthquake resistance standards.

"As engineers, we always add safety factors in our calculations," says Nancy Paquet, senior engineer at Brookfield. "After considering these factors and reviewing updated seismic values published by the government, we recommended adding additional anchors to the existing ones. We inserted steel rods deep into the rock beneath the dam to strengthen the structure—a proven technique that has been used successfully for many years."

Brookfield Renewable maintains a rigorous inspection and maintenance program across all its facilities ensuring safety, efficiency and longevity. This anchoring project is the result of the most recent in-depth study of the High Falls dam.

New Name, Same Commitment to Clean Energy

Beginning in 2025, the name **Brookfield Renewable** will gradually replace Evolgen in signage and communications across Canada. While the name is changing, everything else remains the same—our dedicated teams, our unwavering focus on safety and environmental stewardship, and our continued commitment to producing reliable renewable energy in the region.



Because of their roots, plants retain and stabilize the soil, slowing erosion, filtering water and capturing nutrients such as phosphorus and nitrogen, which feed algae.



In addition to enhancing the aesthetic value of the landscape, a planted riparian buffer strip creates shade, which reduces the heating of water and provides a habitat for wildlife.

Greener shorelines for healthier lakes

In summer 2024, COBALI carried out a shoreline replanting project to enhance the ecosystems of three popular vacation lakes, in partnership with local lake associations. More than 600 native plants were installed across 10 lakeside properties at Lac des Îles, Lac des Écorces, and Grand lac du Cerf, covering over 1,000 linear metres of shoreline.

"We carefully selected native species that offer both ecological and visual benefits," explains Pierre-Étienne Drolet, biologist and project coordinator at COBALI. "In addition to balsam myrtle, we planted species known for their aesthetic appeal, such as serviceberry, which produces edible fruit, and the strikingly beautiful iris. It's proof that what's good for the environment can also be pleasing to the eye!"

This initiative aligns with Quebec's 2018-2023 Water Strategy Action Plan. At Lac des Écorces, the replanting project is playing an additional role—helping to protect two endangered species, the Deepwater Sculpin and the Spring Cisco (see related article). The COBALI master plan had identified this lake as a priority due to the presence of these vulnerable species.

Valuable species at Lac des Écorces

In 2022, The *Association de mise en valeur et de protection du lac des Écorces*, entrusted COBALI with developing a water master plan to assess the lake's ecosystem, identify key issues, and propose an action plan to protect its natural heritage.

Lac des Écorces is of exceptional ecological value, serving as home to two endangered fish species—the Spring Cisco and the Deepwater Sculpin. The Spring Cisco represents the only known spring-breeding population of its kind in North America, while the Deepwater Sculpin is a relic of the Ice Age, a rare species historically found in just five lakes across Quebec.

The action plan outlines several critical measures to safeguard the lake's biodiversity, including promoting responsible boating practices, controlling invasive species, encouraging sustainable land-use planning, and improving agricultural and stormwater management. With the continued dedication of local residents and the support of partners like Brookfield Renewable, Lac des Écorces will remain an environmental treasure for generations to come.



Deepwater Sculpin
Illustration by Joseph Tomelleri



Spring Cisco
Photo : Michel Hénault, MELCCFP

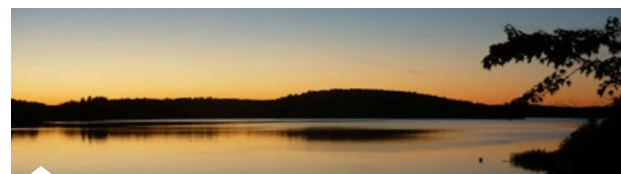
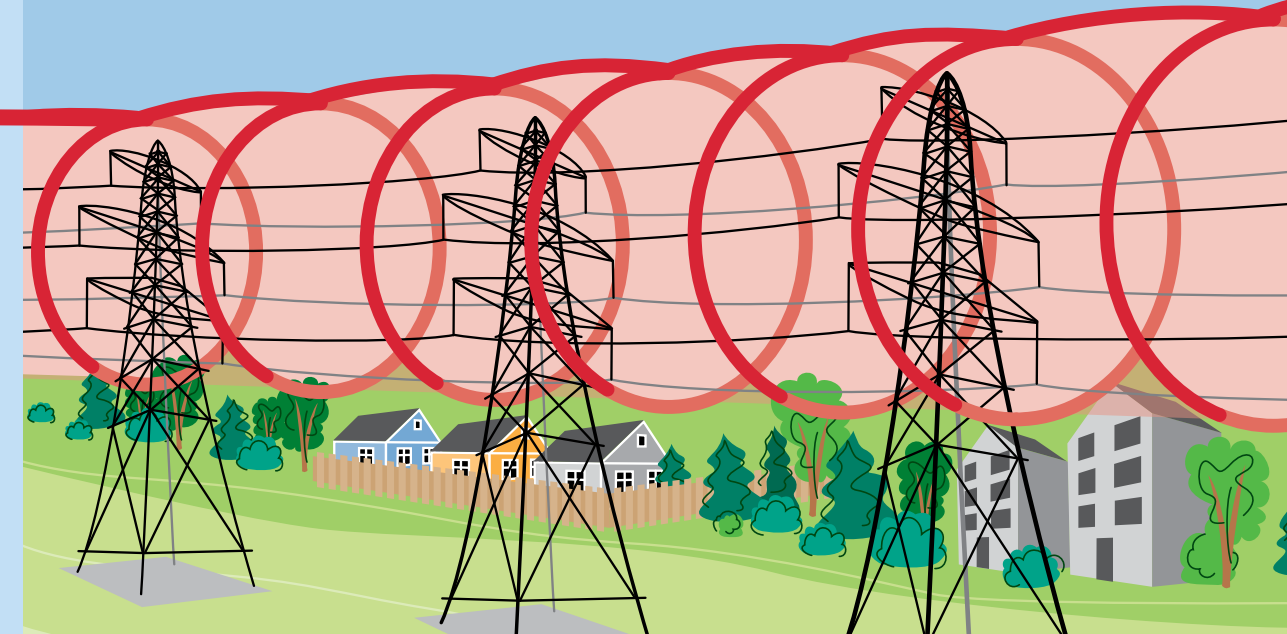


Photo : Pierre-Étienne Drolet, COBALI



Warning, DANGER!

Brookfield Renewable operates power lines that cross the municipalities of Val-des-Monts, Notre-Dame-de-la-Salette and l'Ange-Gardien, as well as the Buckingham and Masson sectors of the city of Gatineau. Their voltage is 120,000 V—a thousand times higher than an ordinary electrical outlet. If you live, work or travel near these power lines, you should be aware of the behaviours to adopt to avoid electric shock or electrocution.



Safe distance ← 5 meters →

Electricity always seeks out the **shortest pathway to the ground**. It can travel along the string of a kite, a tree branch, a ladder, a truck's boom crane or any other object that comes into contact with or is in the proximity of power lines, without even touching them.

Any object **less than five metres** from a power line could give you an electric shock that could be lethal.



Danger zone

Electrical arcing can occur when a person or object approaches a power line, **even without making direct contact**. The current can travel through the air and electrocute you.

The arrows in the illustration show the five-metre danger zone around electrical wires in all directions. **Keep your distance!**



Check before you start work

Are you planning to cut down trees, prune branches or use heavy equipment less than 30 metres from Brookfield Renewable's high-voltage lines? Before you start, call 819-986-4628 or write to infolalievre@brookfieldrenewable.com to assess the danger with us and take the necessary precautions.

Remember...



Kites, drones and remote-controlled airplanes can get dangerously close to power lines. Talk to your children about suitable places to use these items.



Use great caution when installing and using scaffolding and ladders, since they conduct electricity.



High-powered spray guns can produce impressive continuous jets of water. Exercise caution when using them near electrical wires.



Smoke from a campfire contains particulate that can conduct electricity. Never build a fire under power lines.



A collision with a pylon can weaken it and cause electrical wires to sag or fall. Keep away from these structures.



Call 911 immediately if you see a severed power line, a damaged pylon or an object touching a line. **Never approach it.**



Photo : Ville de Gatineau

Buckingham: Home to Quebec Best Water!

The Buckingham water treatment plant claimed top honours in the “2024 Jury Choice” category at Réseau Environnement’s Concours de la meilleure eau du Québec. A panel of seven experts evaluated water samples from the finalist plants, using a process similar to a wine tasting—assessing taste, clarity, and odour to determine the winner.

“The water quality of the Lièvre River is exceptional compared to more industrialized or urbanized rivers, thanks to extensive forest cover and the limited number of towns upstream,” explains Mario Renaud, Manager of Water Treatment Plants for the Ville de Gatineau.

“The Buckingham plant was fully modernized in 2015 and now features state-of-the-art processes, including decantation, ozonation, biological filtration, and UV and sodium hypochlorite disinfection.”

As the provincial champion, Ville de Gatineau’s Buckingham plant will proudly represent Quebec at the American Water Works Association’s (AWWA) “Best of the Best” Water Taste Test in June 2025.



An invasive, toxic intruder

Wild parsnip, an invasive plant native to Europe and Asia, is becoming an increasingly common sight in the Outaouais region. Recognizable by its height (up to 2 metres), serrated celery-like leaves, clusters of small yellow flowers with five petals, and its distinct parsnip-like odour, this plant spreads quickly and aggressively. Wild parsnip thrives in a variety of environments, colonizing fields, roadsides, and even power line and railroad rights-of-way. Its dense growth crowds out native plant species, reducing biodiversity and disrupting local ecosystems. But the danger doesn’t stop there—contact with its sap, followed by exposure to sunlight, can cause a painful skin reaction that resembles a burn. Stay vigilant and be on the lookout for this harmful invader. Recognizing and avoiding wild parsnip can help protect both local biodiversity and your own safety.

Lièvre Food Bank

Fighting hunger together

Since the pandemic, food insecurity has surged, with rising costs making it increasingly difficult for many families to make ends meet. In the Buckingham district, the *Banque alimentaire de la Lièvre* (Lièvre Food Bank), is making a tangible difference, now assisting more than 1,000 people each month—a staggering number that has tripled since 2020!

“In addition to monthly food assistance, we offer cooking workshops, lunches in six schools, a self-serve anti-waste fridge and even a community garden,” explains general manager Anne Mercier. Since last September, La Tablée populaire has further expanded these efforts by serving approximately 50 people daily through a soup kitchen approach.

Short on inspiration for dinner? The Food Bank will soon offer ready-to-eat meals that are as affordable as they are delicious. The shop will be open to the public, and all profits will directly support the organization’s services. Everyone is welcome!



Generous individual contributions account for more than half of all donations to the Food Bank. *“Monthly donations make us very happy, because they add up over time and allow us to respond to immediate needs,”* adds Ms. Mercier.

Brookfield Renewable is proud to provide financial support to the Food Bank, and several other organizations in the region, through its donation program.

To learn more or to make a contribution, visit **www.balievre.ca**.

INFO LA LIÈVRE

If you have any questions about Brookfield Renewable’s operations in the Lièvre region, call Info la Lièvre at **819-986-4628** or **1-877-986-4364** or email us at **infolalievre@brookfieldrenewable.com**.

STAY IN THE LOOP! • For more information on water levels, visit **energielalievre.com**.